

Open Channel Rail  
Mill & Black

# INTEGRITY LINE



Integrity Rail  
SS01-R186-00  
SS01-R186B-00



Universal  
Rail Clamp  
SS01-RC-00



Structural  
Rail Splice  
SS01-RS-00



MLPE Clip  
SS01-RMC-00



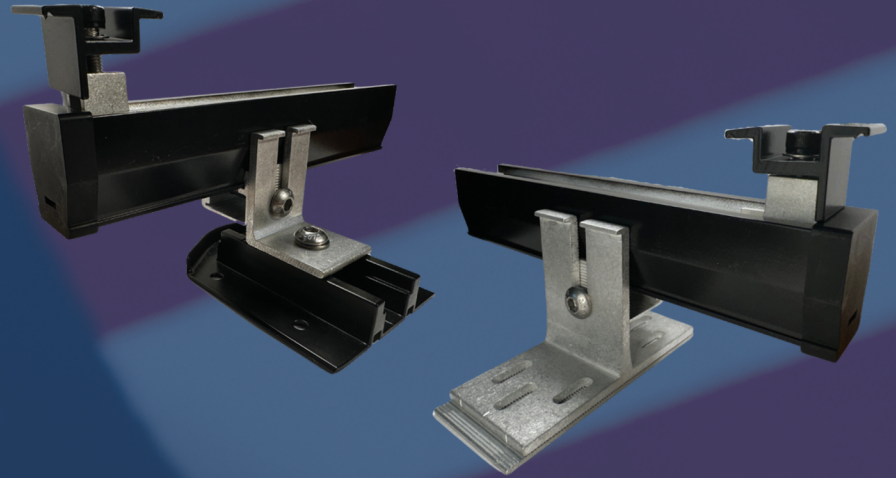
Grounding  
Clip  
SS01-RGW-00



End Cap  
SS01-ECP-00



Rail Bracket



- **A convenient channel rail designed & engineered to meet and exceed ASCE 7-22 loading criteria.**
- **Part of your domestic content strategy.**
- **186" rail lengths. Fewer cuts. Fewer splices.**
- **Structural rail splice. Use it anywhere.**
- **25 year warranty.**
- **Adjustable, waterproof attachments.**
- **Suitable for flat & pitched roofs.**
- **Class A Fire Rating**
- **UL2703 Listed**
- **Florida NOA & HVHZ (certification pending)**

